

Innovate.
in architecture.

06



Inspiration as the cornerstone of contemporary architecture

The world of architecture is ever-changing. One trend has barely become familiar before the next emerges. If you want to score a hit, you have to be capable of finding your way blind through the sustainable techniques and new materials.

Exciting times, in which a helping hand is most welcome. That is why Wienerberger would like to offer you some inspiration in the **Innovate.in.architecture.06** issue, with a few surprising applications of our products.

In addition to a series of widely-discussed projects by other architects, we also zoom in on a few unique building materials. You will see the Bellus ceramic slate in practice, discover the new Latero facing bricks for the first time, learn more about engobes and glazes, and you will meet our white glazed roof tiles. In addition, we will surprise you with the glued look of Iluzo, show you how clay pavers fit in with interiors, and we will invite you to see the dream marriage between Porotherm PLS Lambda and Eco-brick.

Finally, we will also proudly present the haute couture models among facing bricks, from our brick factory Maaseik where all the bricks are 'exclusive'.

We hope that **Innovate.in.architecture.06** will be a sparkling source of inspiration for your future orders.

Enjoy reading it, and enjoy the photos!



Latero:
ultimate purity,
power and punch



**Engobe:
proven refinement**

—
This story is about purity, and the icing on the cake is the engobe. This ancient technique is used to fire an additional top layer onto the brick. It not only creates a durable protective layer, but also emphasizes the changing colours. Satin gloss or matt: an engobe highlights the purity of your Latero façade even more.

The power of nature

—
Latero combines the four primordial elements into a facing brick with a perfect, pure appearance. **Earth** is the basis: the purest clay. The **water** that is used in the Wasserstrich technique gives the brick an irregular structure and gives façades a lively feel. **Air** in turn atomizes the engobe and creates subtle colour nuances. And the **fire** of the kiln turns all this power of nature into a unique brick.

The result is a stylish facing brick that perfectly emphasizes the primitive power of Mother Earth. Which is exactly why we called this brick Latero, a variant of 'la terre'. Latero is available in seven colours: Fire, Sepia, Oriente, Menta, Mogano, Avorio and Rosso.



Engobe and glazing

Hidden treasures from the history of ceramics

–

The Greeks and Romans were absolute trendsetters. It is no coincidence that they were the first to experiment with clay surface treatments, such as engobes and glazes. Both techniques sinter the top layer into the facing brick or roof tile. It makes the bricks or tiles extra resistant against algae and mosses, and (what is more) also gives them a nice coating.

Wienerberger develops its own engobe and glaze recipes, so you can come to us for any possible colour.





AMIC

FACCAI

Developed on request:
the Façatile clay tile in salmon pink nuances



"If various layers of engobe are used on top of each other, you can create enormous colour variations."

Engobe:
stylish matt or satin gloss

–

This technique involves covering a facing brick or clay tile with an engobe emulsion after drying. This is a fine clay powder, coloured with metal oxides and pigments. The entire brick is then fired, which will sinter the top layer onto the facing brick or tile.

The result is a smooth finish layer that gives the product additional class. A matt look is often required, but adding glass-like components to the engobe can also give a glossy satin look. This is called a 'precious engobe', somewhere between an engobe and a glaze.

Terca Marono Bruin Extra E1



Terca Latero Fire

Glazes:
effortlessly withstanding the test of time

Whereas the basis of an engobe is clay, glaze is made up of ceramic pigments, a small amount of pure clay and in particular a large amount of sand (glass). The layer of glaze is applied on a dried facing brick or clay tile, after which it is fired as a whole.

The result is a smooth surface layer with an evenly aesthetic and characteristic look. The glaze can be matt, semi-matt or gloss. To highlight transparent colours even more, glazes can be applied on top of a pre-fired white engobe.

“Glaze offers excellent protection against algae.”



A green crested ridge tile was chosen to restore an historic building. A white engobe layer was used as the basis for the stylish green glaze.



Wienerberger also glazes customized products like this Aléonard tile. A white engobe was pre-fired here too.

If you like white...

...Wienerberger is the right place. Our love of white is clear from the extensive range of products that let you create variations and combinations to your heart's content. We are pleased to offer you a sample of the numerous options on the following pages.



Koramic Plain tile 301 white glazed



DLW architectes, FR – Nantes / Photography: Stéphane Chalmeau

Koramic Plain tile 301 white glazed

<

Contemporary façade patterns

—

The latest edition of Batibouw shows our ceramic roof tiles looking great in modern applications. Fitting white glazed roof tiles at varying separations, and alternating whole tiles with others half as big again creates a non-patterned bond. This results in a contemporary façade, created with classical materials.

^

A transparent town hall for a suburb of Nantes

—

The new town hall of Basse-Goulaine, designed by DLW architects of Nantes, is targeting transparency and accessibility for the town's residents. This goal is also reflected in the clean lines of the upper floor, which has been designed using light-coloured, ceramic Wienerberger roof tiles. Here, these classical roof tiles show that they are not only perfectly suitable for roofs, but also for contemporary wall cladding.

Award-winning apartment block in Paris

The Stalingrad apartment block is a prestigious project in Paris' 10th arrondissement, which features the typical architecture of the nineteenth-century city architect Haussman.

The building's roof and façade in white glazed roof tiles not only honour that tradition, but also add a contemporary note. The contrast with the black glazed roof tiles creates a nice effect too.

The designer Fresh architectures won the ArchiDesignClub Award for 2015 for this project.



Koramic Plain tile 301 white glazed contrasting with black glazed

Fresh architectures, FR – Paris



Lens°Ass Architecten, Bart Lens, Brussels

Koramic Plain tile 301 white glazed

A traditional dyke house hides a modern home in Watervliet

—

An old dyke house gives access to a new ‘underground’ home. This dyke house has been given an entirely white outward appearance, in contrast with the modern new construction underneath it. The enamelled white Wienerberger roof tiles ensure a perfect finish: the roof has a magical, surrealistic look, while fitting in remarkably well with the typical streets.



MSA, Brussels

A social housing complex as the gateway to Brussels

—

Every morning, this social housing complex in the very north of Brussels welcomes thousands of commuters coming into the city. Each and every time, the curved outer walls in white Terca Knabe F1 facing brick give the buildings a fascinating, ever-changing interplay of light. The varied brickwork pattern used for the bottom-floor wall gives yet more depth to the design.



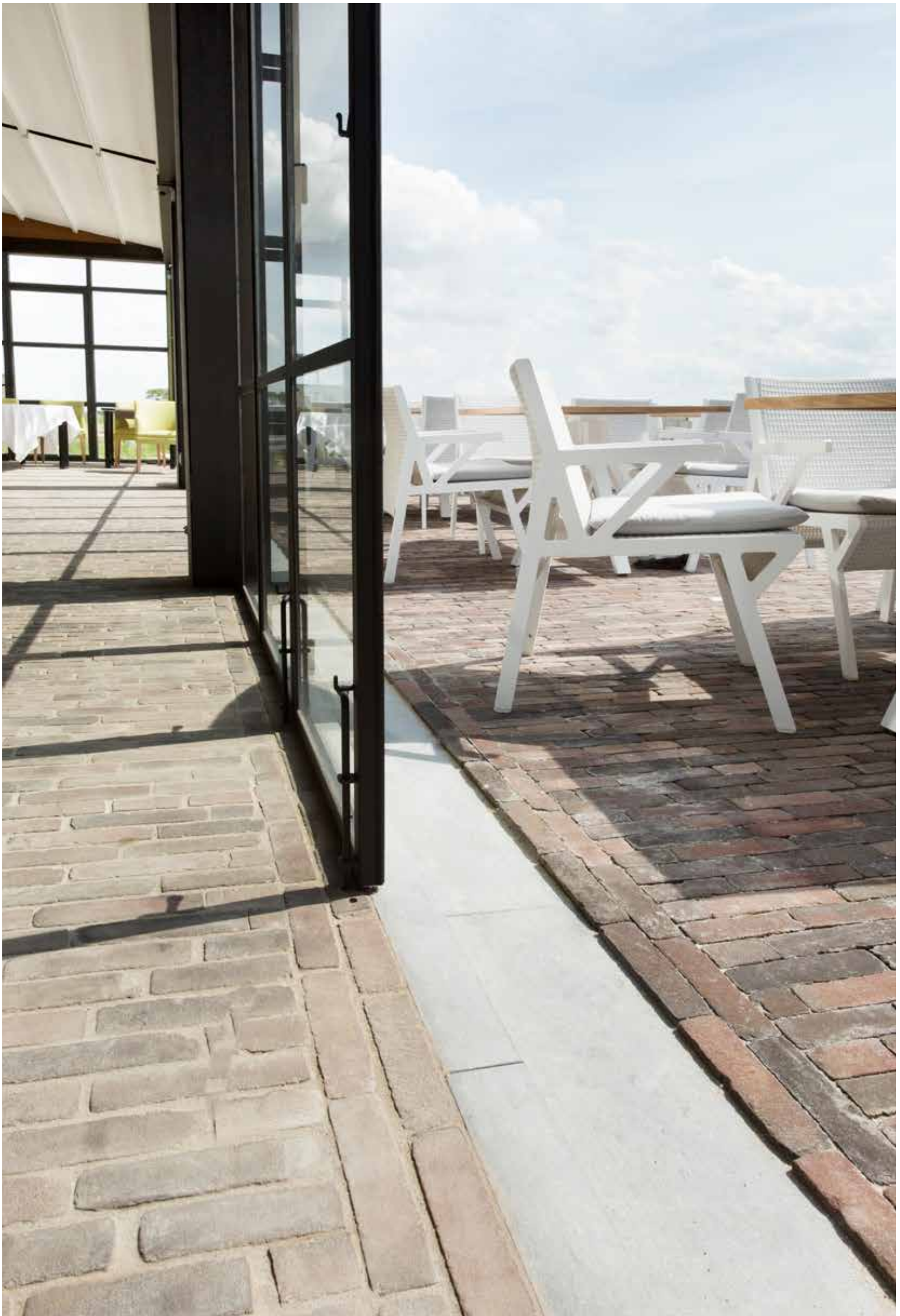


Terca Knabe F1





15



Mixture of Oud Hollands, Oud Utrecht and Oud Breda

Antea Group, Karei Dewitte, Ghent working with X. Donck & Partners Architecten, Deinze

Clay pavers

**Extremely beautiful,
for inside and out**

–

Who said clay pavers are only suitable for your driveway or terrace? Today we are seeing more and more projects that create surprising effects in interiors too. Gardens or terraces, for instance, can extend indoors, creating a single whole that exudes space.

Clay pavers also offer the same advantages in the home: a long lifespan, keeping their colour and shape, low maintenance, and so forth – you name it!



Garden architect Raf Aerden, Essen

Trendline Reno



Showroom for Four Seasons design furniture, Ghent

Trendline Reno

Iluzo,
traditional
masonry
with a
glued
look





Bontinck Architecture and Engineering, Ghent

Terca Iluzo Pagus Bruin-Zwart

For a façade with beautiful clean lines

—

Gluing and thin-joint masonry are on the up. And rightly so, because they offer a lot of advantages: no jointing, immediate results, no grouting to get dirty, and so on. Moreover, the techniques easily integrate the natural charm of bricks into a clean-lined, contemporary design. But not all bricklayers are familiar with these techniques.

That is why Wienerberger developed Iluzo, a facing brick that combines a glued look with traditional masonry techniques.

A concavity in the laying surface makes it possible to use a traditional 12 mm mortar layer. At the front, the bricks are about 4 mm apart. Two small feet provide extra support at the back. They also make sure that excess mortar has a way out: the bricklayer simply scrapes the mortar off at the back. Special corner bricks are no longer needed, because you can choose between bricks with left- or right-handed ends.





Terca Iluzo Pagus Paars

Architektuurburo Dirk Hulpia, Evergem









4-MAIL | kurt vandenbogaerde + staff, Bruges

Terca Iluzo Pagus Grijs-Zwart

Porotherm PLS Lambda and Eco-brick: a marriage made in heaven

Thinner walls with uncompromised load-bearing capacity and insulation

We no longer need to introduce the Eco-brick to you. This sustainable and easy-to-use facing brick is more lightweight than its traditional counterparts and up to 3.5 cm narrower. It will give you more space for insulation or more living space. But if you combine this innovative winner with the new ceramic Porotherm PLS Lambda interior wall bricks, you can take it a step further.

Its exceptionally low lambda value ($\lambda = 0.185 \text{ W/mK}$) gives Porotherm PLS Lambda an excellent thermal score. The result is a thinner insulation package, without reducing the load-bearing capacity. Combining it with Eco-bricks creates a wall structure that is up to 4.5 cm slenderer than usual, while providing the same insulation value (U-value).

"This innovative combination creates walls that are up to 4.5 cm thinner."







The Maaseik brick factory: 24-carat facing bricks

A rock-solid factory for new construction, renovation and restoration

The ring kiln of the Maaseik brick factory produced its first traditionally fired bricks back in 1911. A hundred years later, the very same kiln still ensures a rich range of bricks seven days a week. An excellent choice for prestige projects.

If you are currently restoring an old, distinctive outer wall, or looking for a 'brique unique' – a unique brick that crowns your new construction or renovation project, then the craftsmen at Maaseik know what to do, whatever the shape, colour or size required. And it is their pleasure to invite you to follow the firing process closely.

Different bricks, the same top quality

The types of clay and the high firing temperatures guarantee extremely high-quality facing bricks. The compressive strength is excellent and the porosity is low. As a result, they are able to retain their shape extremely well and are less sensitive to dirt too. The Maaseik factory produces more than fifty types of facing bricks, using a variety of recipes and production methods.





Terca Roodpaars Bont Gesmoord

Architectuurstudio HH, Patrick Fransen, Amsterdam

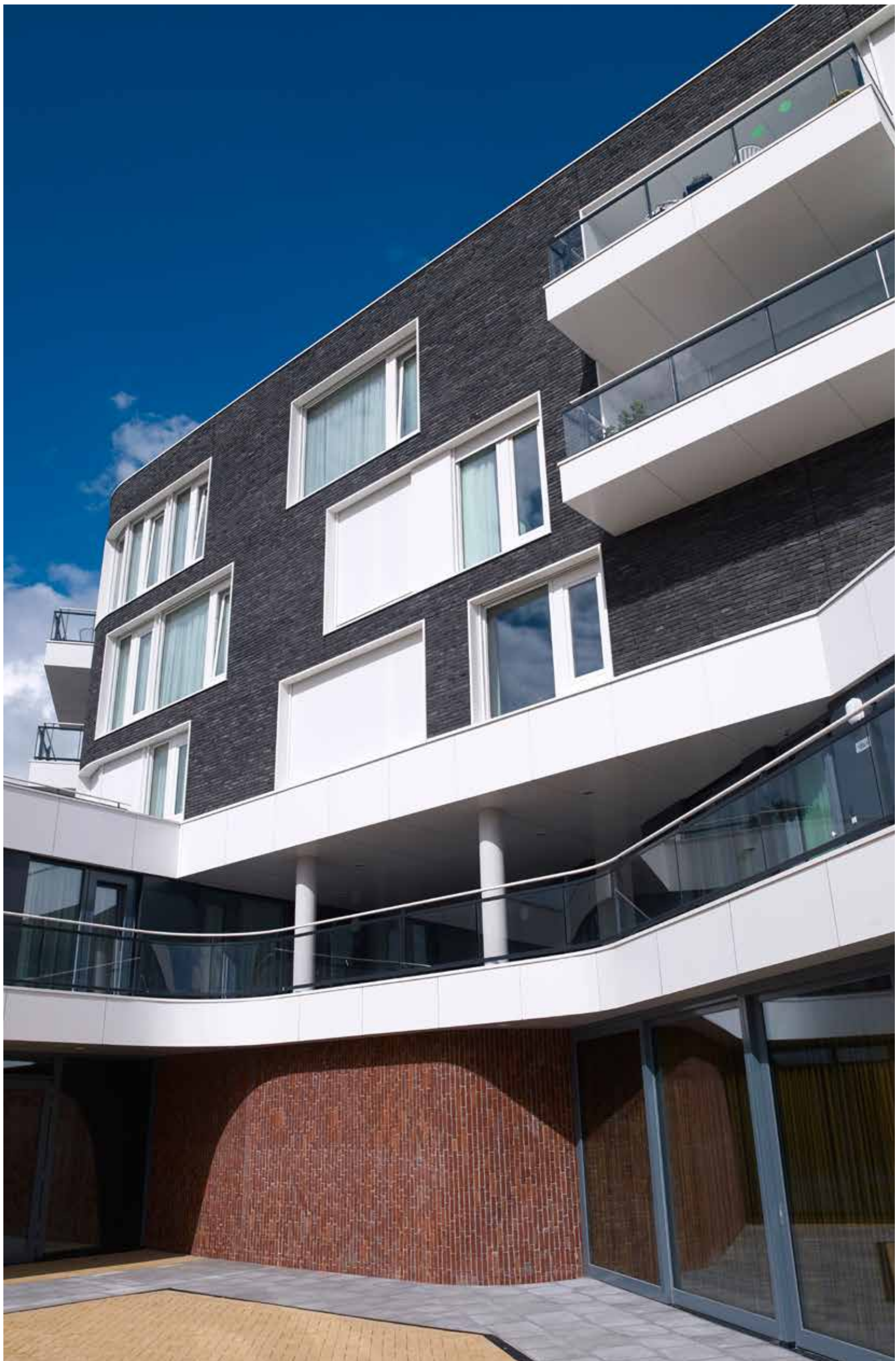


Exclusive bricks for unique projects

—

A lot of ambitious contractors are looking for just that special brick that is traditional, timeless and unique. Architecture pur sang, which does not belong to any single style. Maaseik's facing bricks are ideal for this: self-confident and strong architecture, using honest materials.

Subtlety is the key: the design of these 24-carat facing bricks may be based on old archetypes, while at the same time going beyond them. This expunges every form of banality, without getting bogged down in the search for effects.





Terca Oranje Rood



Architectuurstudio HH, Laurens Jan ten Kate, Amsterdam



Architect Bart Van Wetter, Ghent

Terca Paarsblauw



Aesthetic renovation and restoration

Maaseik's facing bricks are ideal for durable and aesthetic renovations, because of their quality. They complement or even improve existing architecture. They are very welcome in historic restorations too. These are always custom solutions, because the original and restored masonry must blend smoothly together.



Terca Paarsblauw



Cooperative work by AWG-architecten and Koplamp Architecten, Guido Vancoppenolle, Roeselare



Bellus, the elegant ceramic slate

Extremely lightweight, superb to look at, ultra-fine...

–

The previous edition of Innovate.in.architecture introduced you to Bellus, the lightest and thinnest ceramic slate on the market. This time round, we have a few new references for you.

Bellus from Wienerberger is a ground-breaking and versatile product, suitable for both renovations and the clean lines of contemporary new construction. A thin tail and modified head width make Bellus slates look like a continuous roof. The ceramic accessory pieces ensure a neat finish – the icing on your architectural cake.

Moreover, Bellus is not only elegant but durable too. A slate that retains its shape and has a scratch-resistant and UV-resistant surface is your best guarantee of a sturdy roof that will last for generations. The ultimate proof: Wienerberger offers a 30-year guarantee on frost-resistance for Bellus. The 'nature plus' environmental label in turn assures you that these are soundly ecological materials.







Koramic Façatile Braised Blue / Koramic ceramic slate Bellus Slate Engobe



Koramic Bellus Slate Engobe ceramic slates

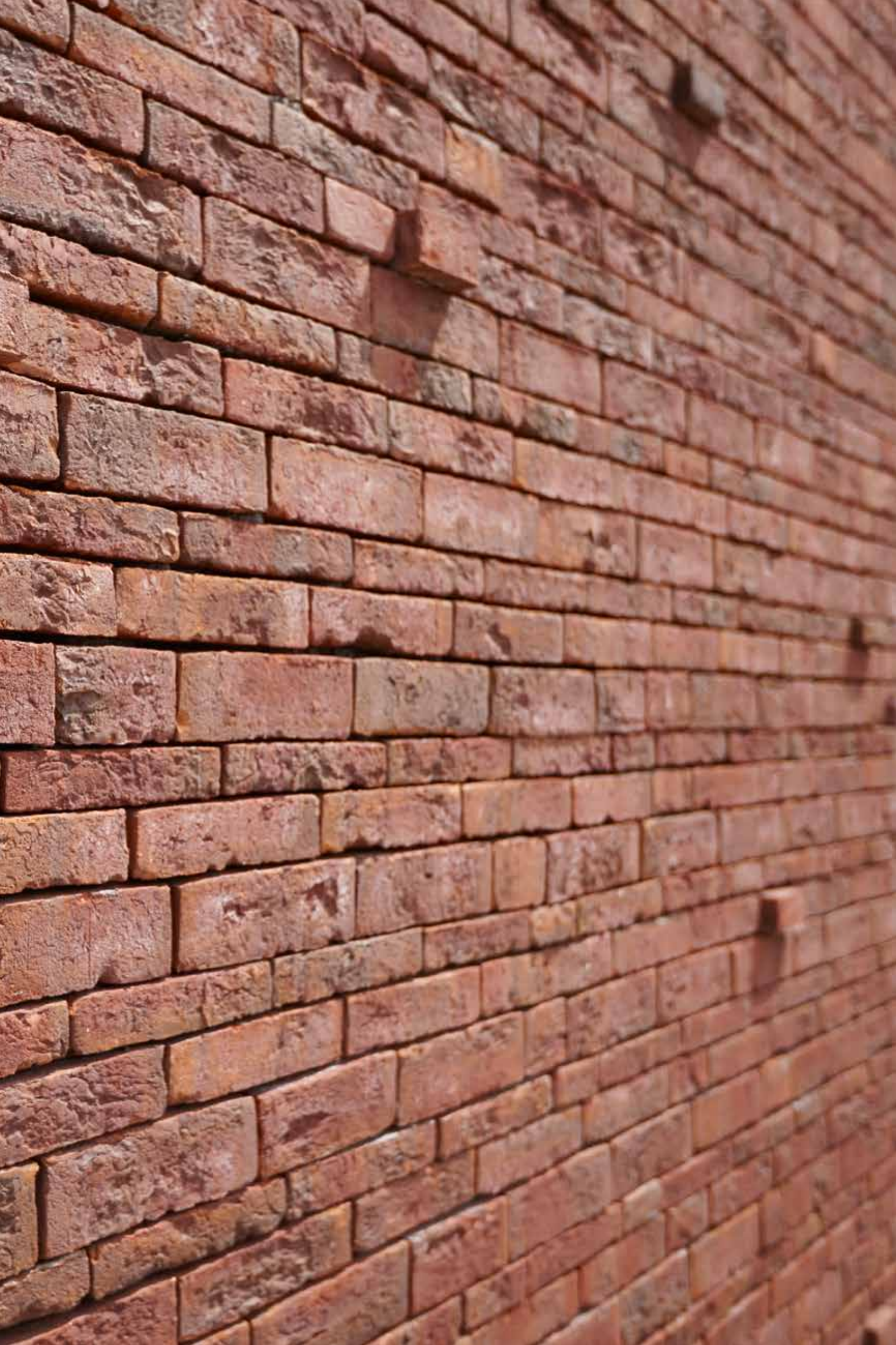
Architect Erik Maeyaert, Diksmuide

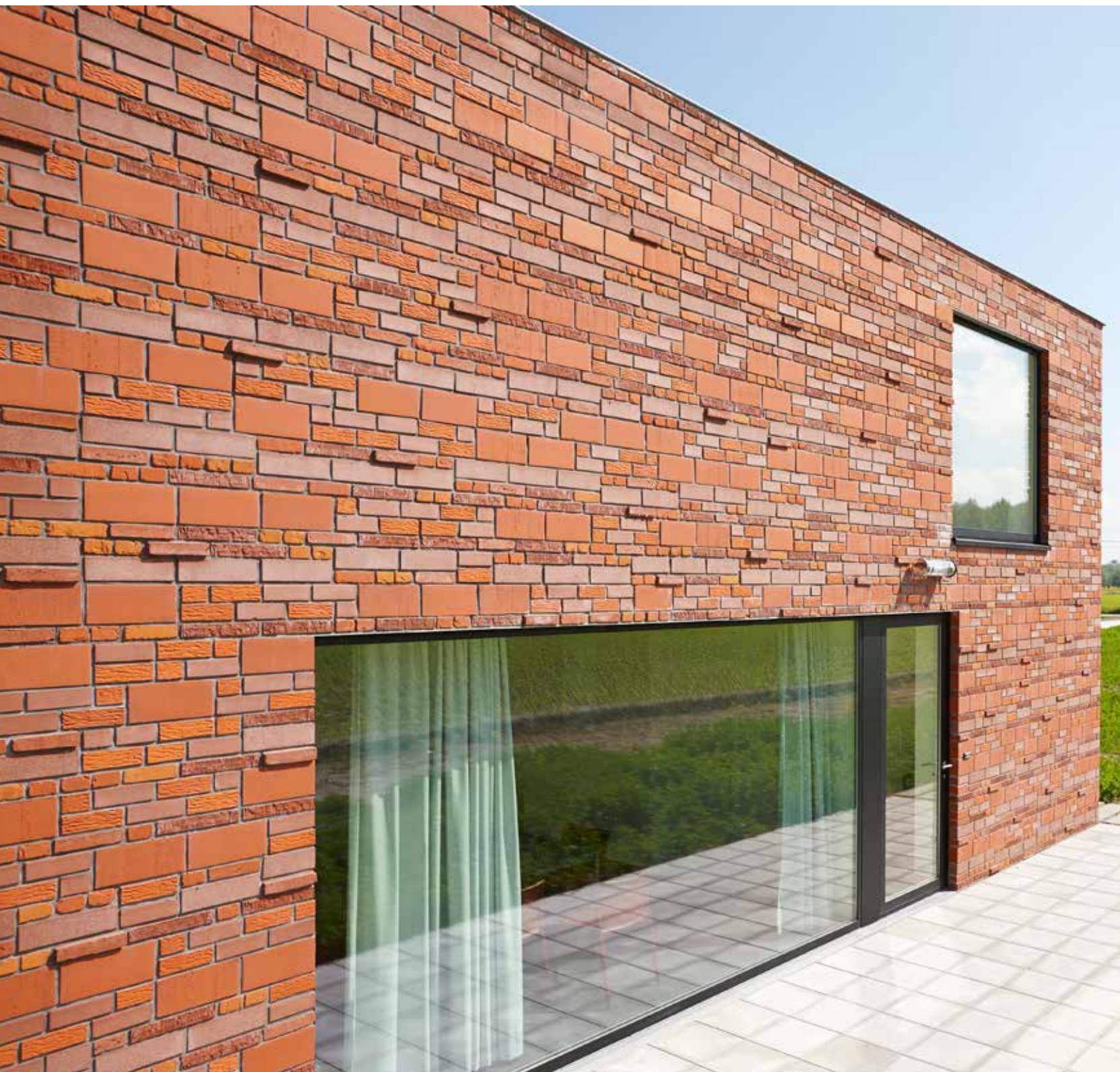


Inspirational projects: a few eye-catchers

This is how to put your vision into practice

What materials do you use to turn your insights into an exceptional final result? Wienerberger gives you a helping hand. Our materials are suitable for a wide range of applications, varied styles and surprising effects. These projects should give you some inspiration.





"We transformed an archetype into a contemporary residential area."



ampe.trybou architecten,
Oudenburg

Contemporary red in Sint-Kruis

In an open polder landscape just outside the city walls of Bruges, ampe.trybou architects created a home consisting of two units, each for six young people with serious behavioural and emotional problems. The architects played with various contrasts: on the one hand between the inside and outside areas, and between the isolation rooms and meeting places on the other. The home is situated in an open environment and encourages further development of the site.

Why use a mixture of Wienerberger bricks?

The rural surroundings inspired the architects in the design and choice of materials. From the Wienerberger product range, they chose bricks in different shades of red and varying sizes such as Terca Rood Glad Kortemark, Rood Schors and Recup Rupelse Rijnvorm with false joints. These bricks were then laid in a certain basic bond, creating a distinctive look that contrasts beautifully with the white walls of the inner garden courtyard.



A mixture of various sizes and shades of red from the Terca range and Koramic Actua 10 LG Natural Red



Photography: François Brix



Terca Edmonton (painted white)

*“Reviving times gone by
using authentic materials.”*



Atelier d'architecture
Pierre Hebbelinck, Liège

Architecture linking past and present for the Mons Memorial Museum

Over the past year, a number of architectural gems have been built in Mons, the cultural capital of Europe in 2015. One of them is the Mons Memorial Museum (MMM). Like the museum itself, the spaces and materials have their own stories to tell. This helps submerge the visitor in the creations, anecdotes and habits of times gone by. Of course, traditional bricks are an integral part of this lively concept too.

Why use Terca Edmonton, Elise and Arte Paars?

The façade has been listed as protected heritage, so choosing Wienerberger clay materials was obvious. The traditional Edmonton facing bricks, painted white, revive ancient times. The same also applies to the Terca Elise bricks and the purple Arte clay pavers. Moreover, their specific colour emphasizes the authentic 'vibe' of the whole museum.



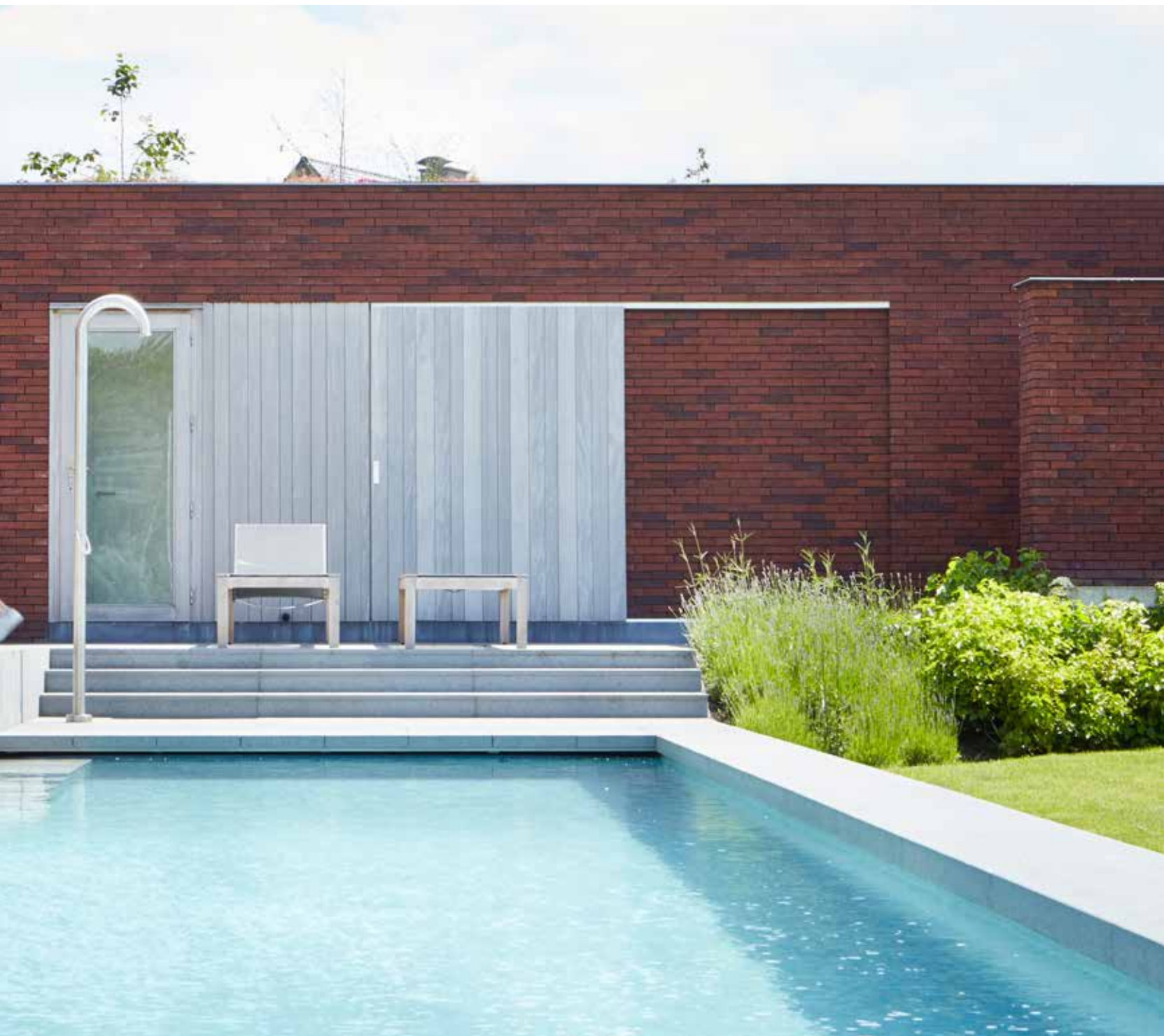
Terca Elise / Arte Paars





"The numerous modifications make this home seem to blend in with nature."





Terca Pampas



Cammers Delaere Architecten,
Ghent

A perfect blend of living and nature in Merelbeke

Sunlight and the surrounding nature dominate in this home at the edge of the Merelbeke Scheldersmeeren nature area. On the street side, a 'bite' taken out of the wall lets early morning sunlight into the spaces at the back. The large windows not only let light in the whole day long, but also give a theatrical view of nature, birds and animals. The sunken swimming pool gives you the feeling that you are swimming in the 'meersen', the lakes.

Why use Terca Pampas?

The earth-coloured, red-brown and shaded tones of Terca Pampas facing bricks let the house almost blend into the surroundings. The irregular structure of the bricks also hearkens back to nature, where every day is different. The thin-layer brickwork allowed the architects to use clean volumes that harmonize perfectly with the environment.







Terca Passiebloem



Stramien, Bart Verheyen,
Antwerp

Integrated care apartments in Antwerp

The eighteen care apartments are part of the Sint-Camillus residential care centre. The focus in this design is on the living quality and independence of the residents. Each care apartment is designed to be a fully-fledged home, with a broad view over the surrounding park. The residents can really enjoy the peace, daylight and the green surroundings. Although this project is part of a care campus, it deliberately aims to fit in with the public domain around it. The contractor sees care homes as part of society and therefore as a component of the residential area.

Why use Terca Passiebloem?

The architects wanted a modern way of integrating not only the residents but also the care apartments they live in into the residential area. Using Wienerberger's Terca Passiebloem facing bricks made it possible to fit the care apartments in with the existing buildings in a timeless way, adding a contemporary note at the same time. This lets the horizontal and vertical brick walls match the architecture of the nineteenth-century city periphery perfectly.





"The brick façade lets us create a modern link to the existing architecture."









Gino Debruyne & Architecten,
Bruges

A convent in Bruges becomes a unique residential care centre

The Engelendale residential care centre – which has been the home of the Dominican Sisters since 1865 – is a collective residential project with a clear vision for care of the elderly. It contains a variety of housing types such as care rooms, care studios and care apartments. With due respect for the original building, Gino Debruyne & Architecten created an extension that runs from the street through to the interior spaces. The design allows interaction with the city as well as peace and security.

Why use Terca Olm and Koramic Plain tile 301 Rustic?

The extension and the convent were given a uniform look. For both, the architects used Terca Olm for the outer walls and Koramic Plain tile 301 Rustic for the roof. The style of wall for the new structure was given a note of its own with a non-patterned bond, with no particular arrangement of the bricks, and thin-layer mortar. The effect is surprising and subtle, as is the foot of the façade, which is speckled with green-glazed stone headers.



Terca Olm and green-glazed bricks (header side) / Koramic Plain tile 301 Rustic



*“Carefully selected materials
turn the building into a warm
place for living.”*





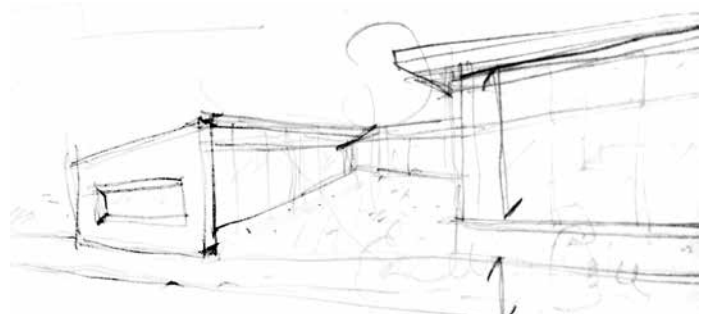
"Clean lines and raw forms combined in harmony."



Terca Hectic Extra



Architect Céline Van Impe,
Vaux-sous-Chèvremont



A contemporary home in Vaux-sous-Chèvremont

This home in Vaux-sous-Chèvremont near Liège has a view over the valley of the Vesder. Thanks to the adjoining 5,000 m² of agricultural land, the building can extend a long way. The architect Céline Van Impe made full use of the steep slope of the agricultural land: the northern façade is largely recessed into it. On the south, the sun brings natural warmth into the home because of the large windows. For the interior, the architect drew inspiration from modernist architecture of the 1970s. The result is a contemporary space.

Why use Terca Hectic Extra?

Terca Hectic Extra bricks are special because of their rough and irregular texture and numerous rounded edges and irregularities. The architect chose to have the distinctive bricks laid without a specific pattern and with very narrow glued joints. This yields an effect that changes with the incident angle of the light, as well as a nice contrast with the clean lines of the building.







Declerck-Daels Architecten,
Roeselare

A housing block as a sturdy monolith in Moorslede

Declerck-Daels Architecten have planted a powerful, robust monolith in the open surroundings of Moorslede. They planned it carefully, with a rural view southwards and a closed wall to the north. They also play with the various spatial levels and ceiling heights, making it easy to let in the sunlight and give each space its own atmosphere.

Why use Terca Blauw-Rood Genuanceerd?

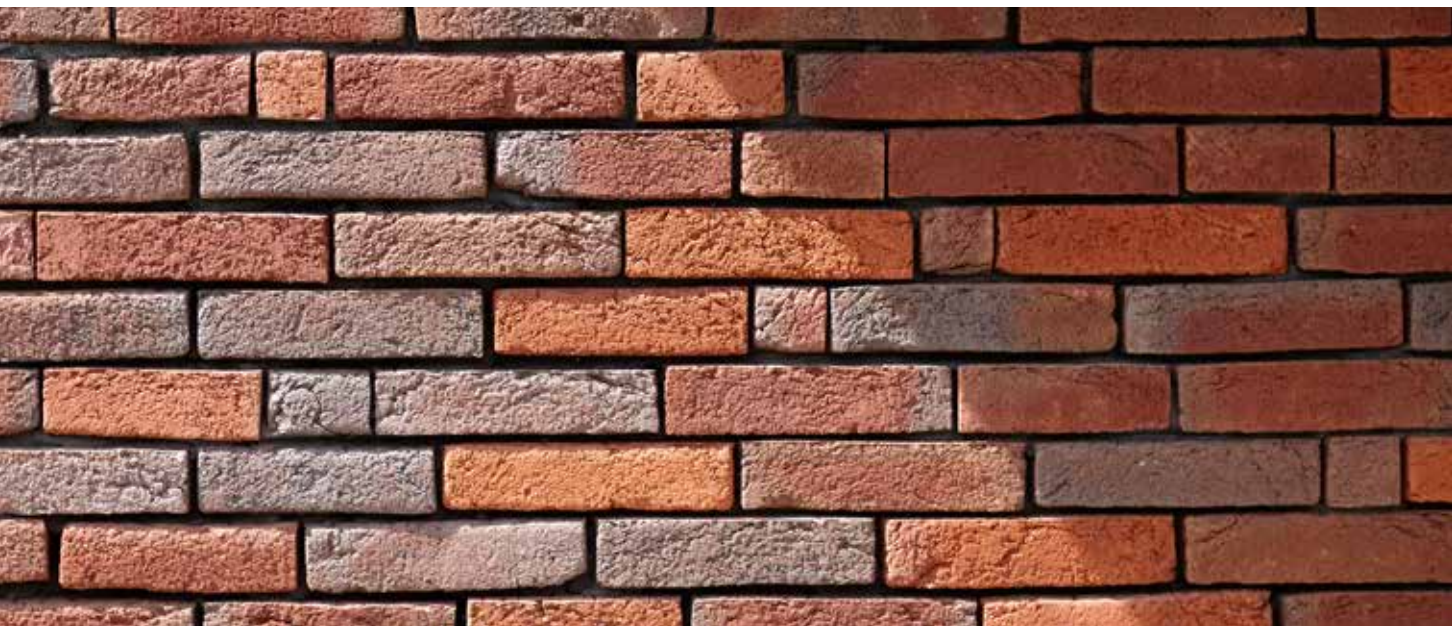
For the architects, this facing brick was a fairly obvious choice, as it is an honest, attractive and durable material that also fits in well with the landscape. Using thin-layer mortar highlights the bricks even more. The red bricks can be seen from the kitchen too, which adds to the feeling of contact with the natural material.



Terca Blauw-Rood Genuanceerd



*"A brick sculpture in
Flemish fields"*



Terca Alverna



Trendline Reno



Architectenbureau Tectonic,
Boechout

*“A dialogue
between different
textures”*

View of the green, rolling fields of Heverlee

The architects at Tectonic immediately saw the trump cards held by this site in Heverlee: a great view of the rolling fields and a site that slopes down towards the back garden. Choosing to create living spaces that open up wide towards the garden was therefore easy. They decided on large windows for the upper floor as well that seem to frame the landscape – a dream view for the owner, who works from home.

Why use Terca Alverna?

The strongly nuanced Terca Alverna facing bricks caught the owners' eye; they seem to bring the rich colour nuances to life. In order to emphasize this to the full, they decided to maintain large planes of the walls and bring the windows close together. Trendline Reno clay pavers fit in perfectly with the whole.



*“Wide views of the
polders of Flanders”*



Terca Blauw-Rood Genuanceerd / Koramic Plain tile 301 Braised Blue



Architect Luc Groosman,
Sint-Laureins

Modern farmhouse in Sint-Laureins

In Meetjesland in the east of Flanders, the residents of this home enjoy a landscape of polders and creeks. The architect Luc Groosman gave each room a view over this panorama through numerous windows on the rear façade. The building is an elongated farmhouse with a saddle roof that has multiple roof pitches. This meant that the bedrooms at the back of the house could be given windows, while there was room for a hall at the front under the steeper slope.

Why use Terca Blauw-Rood Genuanceerd and Koramic Plain tile 301 Braised Blue?

It seemed obvious to use blue muted Koramic Plain tile 301 tiles for the roof, which lies on top of the main volume as two separate planes. The Blauw-Rood Genuanceerd facing brick, laid in a non-patterned bond using thin-layer mortar, fits in well with the garden walls. This creates a contemporary whole, which has a very warm look too because of its colour nuances.



Terca Hectic Gesmoord Special

*“Two entities within
a single whole”*



Atelier M Architects+Planners, Brussels

New look for the old town hall in Tildonk

The old town hall in the village centre of Tildonk was given a new layout with three apartments. The architectural studio managed to retain the character of the town hall by making use of the former entrance and respecting the existing load-bearing structure. The architects added a new structural volume with four more apartments next to the town hall. The contemporary new construction forms a nice dialogue with the classical town hall.

Why use Terca Hectic Gesmoord Special?

The architects wanted to use bricks with strong nuances, like in the town hall. They chose brickwork without joints in order to emphasize the difference between the old and new part even more. Because of the light-coloured joints in the town hall, the colour nuances stand out less than in the new construction. This creates two entities within one whole.



ar-te architectenvenootschap,
Leuven

Modern eye-catcher at the Sint-Katelijne-Waver auction site

BelOrta, the largest cooperative auction in Europe, moved to a new location at the Sint-Katelijne-Waver auction site in 2013. In this new building of 3,000 m², BelOrta will be more able to expand its commercial and supporting services. In consultation with the clients, the architects at ar-te chose an interactive and performance-oriented design that is entirely about the daily commercial reality of the company.

Why use Terca Spaans Rood?

According to the architects, Terca Spaans Rood was the ideal brick. It has a classical and strong look. At the same time, it is an eye-catcher because the sturdy, protruding masonry runs the entire length of the building. The contemporary look of the building accentuates BelOrta's profile as the beating heart of cooperatives with international scope.



“Creating space with attention to the experience, functionality, durability and overall price.”



Terca Spaans Rood

“The characteristic brick ensures that the home stands out in the streets like a sculpture.”



Terca Blauw-Rood Genuanceerd in three sizes



Van Dooren Architecten,
Pascal Van Dooren,
Merchtem

A solid home in Merchtem

The way the various volumes of this home are stacked together integrates it into the scale and forms of its environment. The contrast between the busy street and the view of the peaceful, open meadows on the garden side is reflected in the layout of the home. While secondary rooms such as the bedrooms are on the street side, the living spaces enjoy a full view of the wide surroundings.

Why use Terca Blauw-Rood Genuanceerd?

The strong character of this facing brick emphasizes the solidness of the home. The various nuances in the brick ensure that the home stands out within the street. The interplay of the various volumes in the building is emphasized even more by the protruding heads in the outer walls. These also create a nice shadow play, which brings life to the façade. The facing brick has been extended as the ceiling for the covered entrance zone as well, maximizing the feeling of the volumes.





Terca Marono Bruin

“Homogenous and solid, but also personal and dynamic”



GDR-architecten bvba, Gentbrugge

Housing block brings colour to a new district in Gentbrugge

The Trefil Arbed urban renewal project was set up in Gentbrugge in 2015. As part of that, a number of new premises were built, including seven owner-occupied homes. The architects chose to make it a single building block, with identically designed homes in a terraced row, thereby achieving a considerable reduction in the cost price. On the other hand, they wanted to avoid the housing block becoming monotonous. That aim of diversity was achieved using carefully considered materials.

Why use Terca Marono Bruin?

The lively character of Marono facing bricks was decisive. A surface that alternates between rough and smooth gave the wall a dynamic note. And when sunlight is reflected onto the façade, it will come to life. At the same time, Marono made it possible to create a homogenous and solid plane, laid in a non-patterned bond using thin-layer mortar. In addition, each entrance was given different colour. That gave the houses their own personalities and made them recognizable. This playful note also creates a nice variation within the row of houses.





Lobelle Studiebureau,
Jabbeke



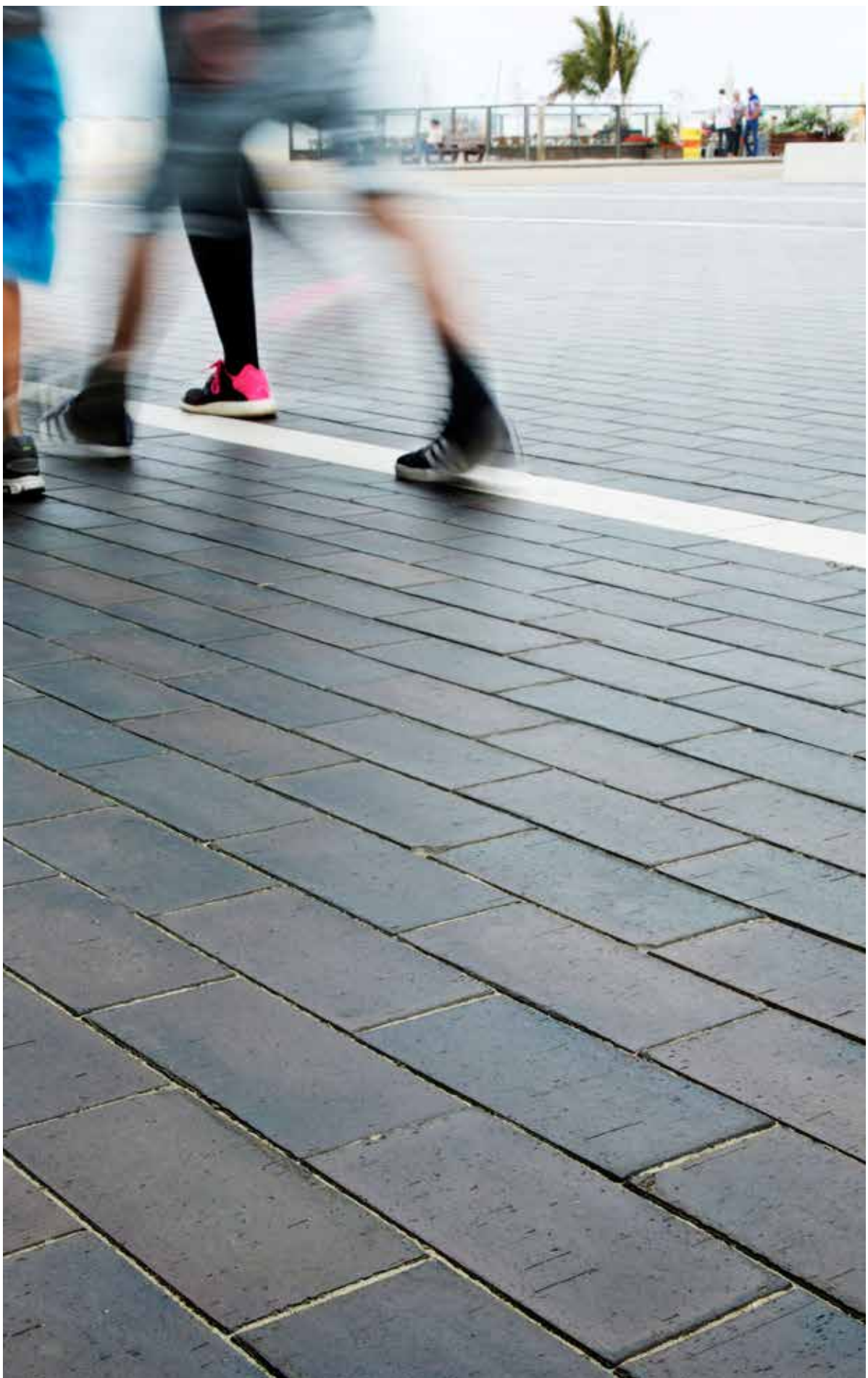
A multifunctional square in harmony with the sea wall in Oostduinkerke

Until last year, the Astridplein square in Oostduinkerke did not utilize its potential to the full. The location was used for car parking, which obstructed the view of the beach. To give the square a new vivid look, the local authority decided to build an underground car park, turning the square into an access route to the sea wall. The design and the use of materials were therefore crucial.

Why use Scala Dresden clay pavers?

The architects did everything they could to make sure that the square and the promenade would look like a single unit. They chose clay pavers for this: colourfast, not affected by frost, and with a permanent natural look – ideal for retaining that harmony in the long run too. Clay pavers turned out to be just right for a very sandy environment too, as the sand ensures optimum filling of the joints. From the varied range of colours offered by Wienerberger, the architects chose blue-grey Scala Dresden clay pavers, with their underlying anthracite and brown nuances.





Scala Dresden

"Colourfast, not affected by frost, and a permanent natural look"



Essa Ingenieurs- en architectenbureau, Diest

A day care centre as part of an overall project in Westmeerbeek

At the beginning of 2015, fifty children were accommodated in a new day care centre. This project was part of a larger order. In addition to the day centre, a new project for social housing would be started later on. The houses and the day care centre had to be harmonized perfectly – in terms of both the design and the materials.

Why use Koramic Façatile clay tiles?

Because it is a place for children, the architects decided to build the main volume in the shape of a traditional home, the way that a child would draw a house. That is why the architects were looking for a way to disconnect this 'primitive house' visually from other masonry in the neighbourhood. A material that could be used for both roofs and walls, thus creating a clearly delineated volume, was an extra bonus. Koramic Façatile clay tiles combined with Actua clay tiles in the same colour met these two requirements perfectly.

*"A clearly delineated
house for children"*



Koramic Façatle Slate Engobe / Koramic Actua 10 LT Slate Engobe

“Clay pavers: highly symbolic of the surroundings”



Antea Group, Karel Dewitte,
Ghent

New paving in Donk is all about authenticity

In 2014, the village centre of Donk near Maldegem underwent a real metamorphosis. When a new sewer system was being constructed, the municipality took the opportunity to renew the paving. The cobbles were replaced by paving stones. The architects chose clay pavers for the footpaths, creating an attractive added aesthetic. And because the footpaths are at the same level as the road, they look much wider than before.

Why use Authentica Retro Havanna clay pavers?

Antea Group was looking for a durable material that is in perfect harmony with the paving stones on the one hand, and the peaceful environment on the other. They found this subtle balance with clay pavers. In addition, Authentica Retro Havanna fitted in perfectly with the aims of the municipality and the architects: it yields an authentic look, as if time has stood still. Moreover, the materials are symbolic of the surroundings: rural and rustic, yet with a contemporary note.



Authentica Retro Havanna





The photographs in this brochure are indicative only, and may differ from the actual material. The information contained in this brochure shall not be considered binding and may be altered at any time by Wienerberger. 01/2016

Wienerberger
International Export Division

Kapel ter Bede 121
B-8500 Kortrijk

T +32 56 24 95 83, F +32 56 26 43 32
export.be@wienerberger.com
<http://export.wienerberger.com>
<http://export.wienerberger.com/ar>
<http://export.wienerberger.com/es>
<http://export.wienerberger.com/pt>
www.wienerberger.cn